

LARRY LASLO FOR ROBERT ALLEN ARTISAN

INTRODUCTION

Canyon Beauty,
Aquamarine



Metallic Gems, *Onyx*; Metallic Gems, *Brass*



LARRY LASLO DESIGNS
for
ROBERT ALLEN

About The Collection

Larry Laslo's fourth collection for Robert Allen, **Artisan** reflects more than just the acclaimed designer's professional point of view—it brings to life his personal passion for art.

A sought-after tastemaker who is himself a working artist, Laslo has a lifelong passion for art—and his new collection was directly inspired by his favorite paintings, sculptures, and objects. The patterns echo lines and motifs Laslo has loved, while the colors were either derived from specific works or chosen to complement art he has loved.

In art and design, Laslo's guiding principle is that color must be present, but always easy to live with. In this collection, earth tones predominate, and sit alongside bold hues like orange, fuchsia, purple, and teal—each intense and unique shade related but not matched, to create a world of fabrics designed to layer together beautifully.

This comprehensive assortment features statement patterns as well as fashionable solids, and textures run the gamut from rich pleated velvet to understated linen jacquard; taken together, Artisan offers all designers access to Laslo's truly idiosyncratic point of view—an artist's eye.

LARRY LASLO FOR ROBERT ALLEN ARTISAN

THE ARTISAN MOVEMENT



ARTISAN: Self-Reliance and Self-Expression

An artisan (from [Italian](#): *artigiano*) is a person engaged in or occupied by the practice of a [craft](#), who may through [experience](#) and [talent](#) reach the expressive levels of an [art](#) in their work and what they create. This level of self-expression has expanded to include everything from expert watchmaking to fashion to culinary delights like breads and micro-breweries.



FEATURED FABRICS



Artigiano *Cerise*

A dynamic geometric linen embroidery with a subtle ikat effect in a rainbow of rich colors.



FEATURED FABRICS



Scrolling Art *Truffle*

Linen design embellished with a metallic paisley medallion. Jewelry for any fine interior.



JULY
2012

LARRY LASLO FOR ROBERT ALLEN ARTISAN

FEATURED FABRICS



Mosaic Field

Amethyst

A traditional floral kilim with a luxe twist.
Rich neutrals mix with hints of soft purple.



JULY
2012

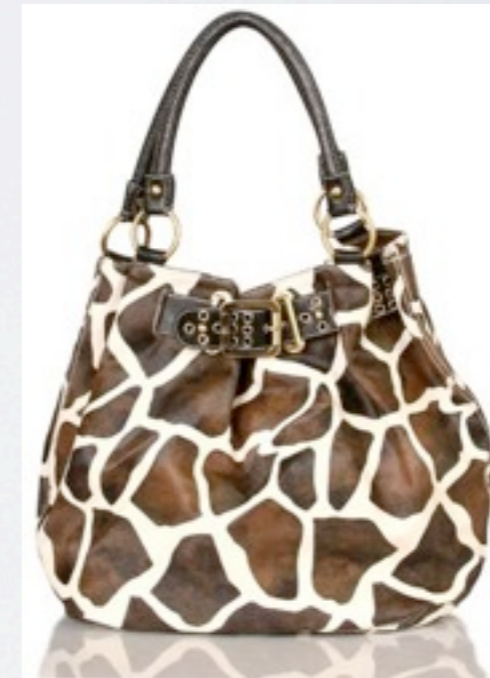
LARRY LASLO FOR ROBERT ALLEN ARTISAN

FEATURED FABRICS



Rocky Way *Tangerine*

An abstract giraffe pattern in a richly textured Italian jacquard.



JULY
2012

LARRY LASLO FOR ROBERT ALLEN ARTISAN

FEATURED FABRICS



Ratana Swirl

Nickel

A high quality Italian damask with rich luster and intense dimension.



FEATURED FABRICS

Pablos Passion

Amethyst

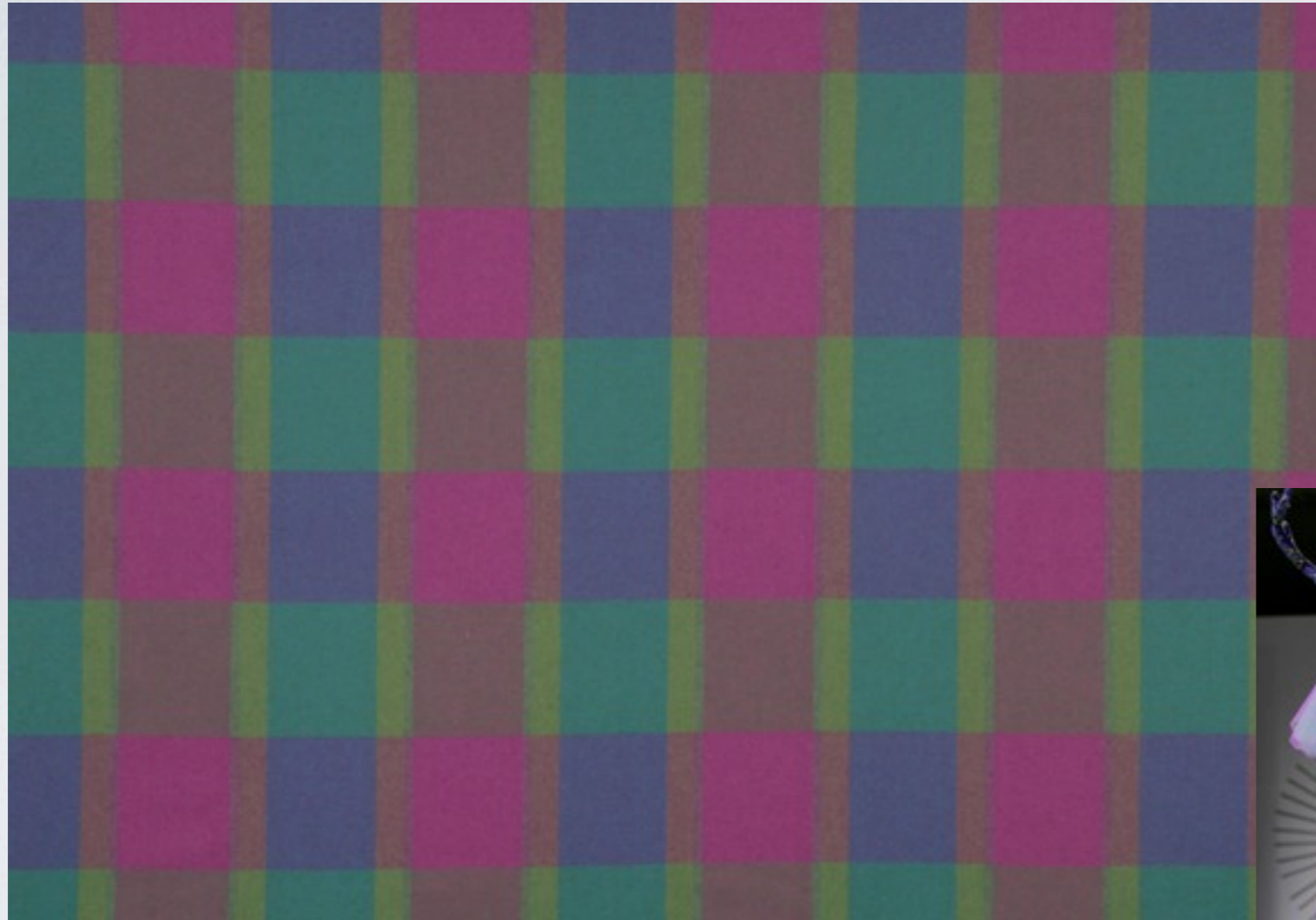
Inspired by a piece of ancient pottery, Larry celebrates color and shape with this dressy jacquard.



JULY
2012

LARRY LASLO FOR ROBERT ALLEN ARTISAN

FEATURED FABRICS



Plaid Wool

Iris

A truly luxurious and soft plaid made from 100% wool.

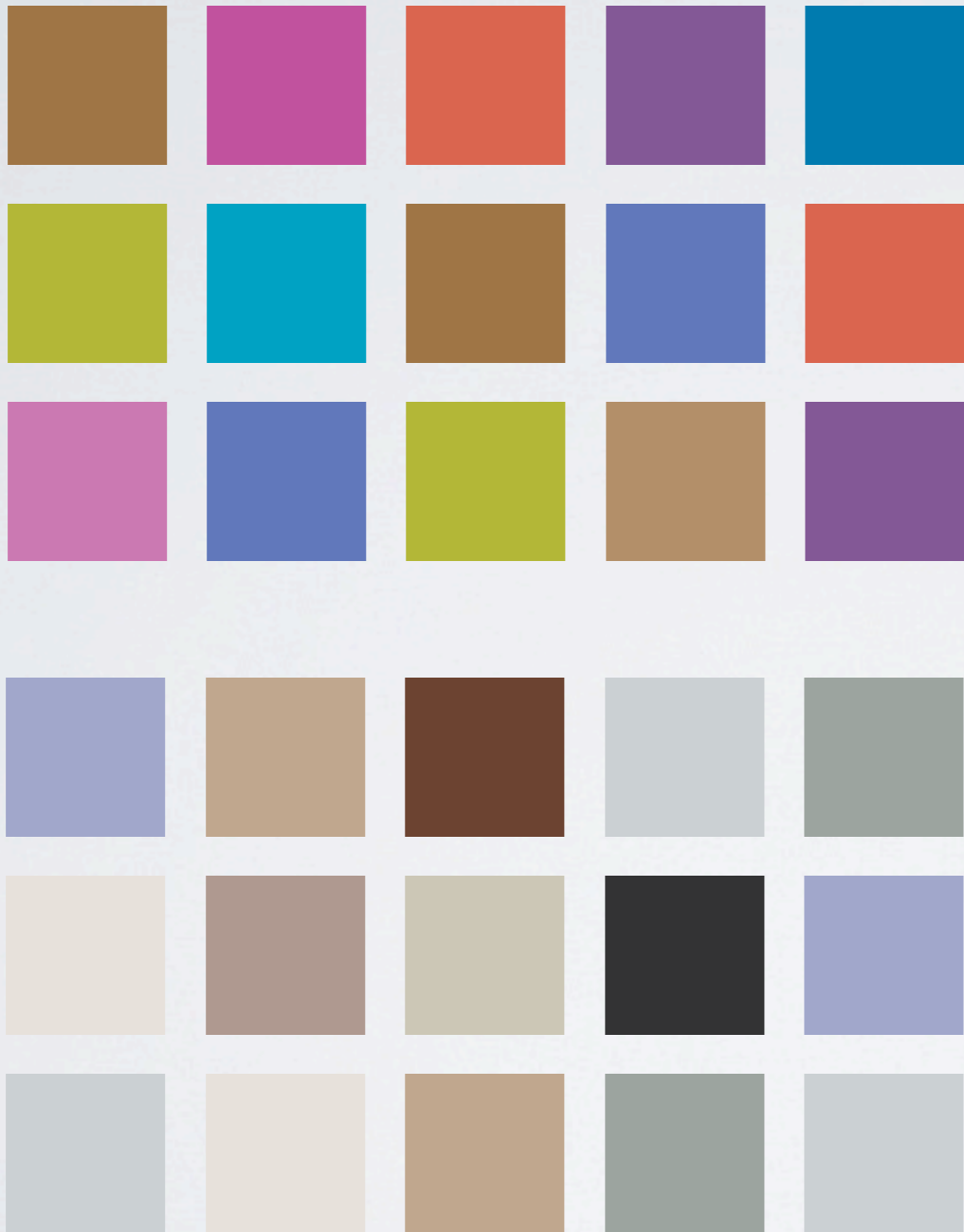


Factoid

Larry Laslo's new Palm Beach bungalow was featured in a 6-page spread in the May 2012 issue of *Elle Decor*.

LARRY LASLO FOR ROBERT ALLEN ARTISAN

COLOR LENS



The Larry Laslo collection showcases color in a fashion-forward offering that pulls inspiration from the vivid colors found in jewelry and pottery.

GEMSTONE

Jewel tone coloring dominates this book with intense, but livable hues of orange, fuchsia and teal.

QUARTZ STONE

Clean, crisp colors mimic the natural coloring of minerals and pottery to create an inspiring neutral palette.

JULY
2012

LARRY LASLO FOR ROBERT ALLEN ARTISAN

OVERVIEW



ARTISAN GEMSTONE (520050)
NUMBER OF SKUS: 48



ARTISAN QUARTZ STONE (520049)
NUMBER OF SKUS: 52

Factoid

Artisan is the fourth LLforRA collection, following Formations, Alchemy, and Destinations.

BEACON HILL WATERCOLORS

INTRODUCTION



Beacon Hill fabric Soo Locks in Smoke (released in 2011 in the BH Smoke Color Book) was used by designer Ron Fiore in the master bedroom of the 2011 Hampton Designer Showhouse. The showhouse was covered in the October 2011 issue of *Traditional Home* on pages 59 – 64.

WATERCOLORS

About The Collection

Watercolors is Beacon Hill's newest showroom-exclusive collection. This group of prints consists of expressively rendered designs based on watercolor paintings. The collection features four exclusive prints, each one worthy of standing on its own as a piece of art and available in palettes from neutral to bright and saturated. These prints work perfectly with the solids released in October 2011 in the Beacon Hill collection *Linen, Wool & Cashmere Solids*.

The collection began with the Beacon Hill pattern Soo Locks, a soft and abstracted interpretation of a mountainous landscape previously released in the Beacon Hill Color Books Clay, Frost, Smoke and Teak. Soo Locks is characterized by an expressive hand and impressionistic style, typical of Fauvism and early Modernist art work. The Beacon Hill design team worked with the artist who created Soo Locks, to develop two additional patterns for the Watercolors Collection: Songbird and Maricel. These two designs, with their loosely painted compositions, bear hallmarks of early modernist painting as well. Nila Ikat, a transitional ikat motif painted in a bold watercolor style, exhibits an abstracted graphic quality that allows it to pair perfectly with the other designs.

These stunning, multi-colored prints on linen grounds will offer original artwork and bold colorations for sophisticated design solutions.



BEACON HILL WATERCOLORS

FEATURED FABRICS



Soo Locks *Clay*

Soo Locks

A soft and abstracted version of a mountainous landscape previously released in the Beacon Hill Color Books Clay, Frost, Smoke and Teak.



Soo Locks *Frost*



Soo Locks *Smoke*



Soo Locks *Teak*

BEACON HILL WATERCOLORS

FEATURED FABRICS



Nila Ikat *Moonstone*

Nila Ikat

A stunning transitional ikat motif created with a unique watercolor technique.



Nila Ikat *Indigo*



Nila Ikat *Peapod*

BEACON HILL WATERCOLORS

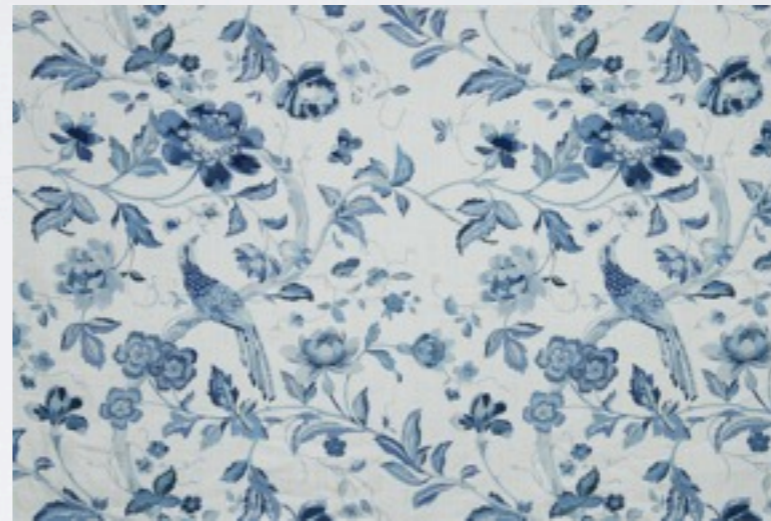
FEATURED FABRICS



Songbird *Rose*

Songbird

A grand-scale bird and tree motif, inspired by a nineteenth century English document.



Songbird *Indigo*



Songbird *Jade*

BEACON HILL WATERCOLORS

FEATURED FABRICS



Maricel *Afternoon*

Maricel

An architectural landscape in a hand-painted watercolor design.



Maricel *Indigo*



Maricel *Linen*

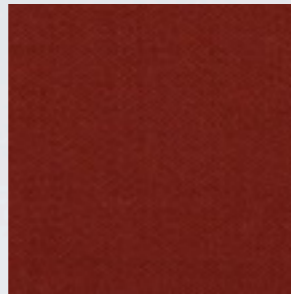
BEACON HILL WATERCOLORS

COORDINATING SOLIDS

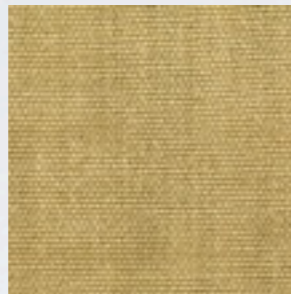
Watercolor prints work perfectly with the solids released in October 2011 in the Beacon Hill collection **Linen, Wool & Cashmere Solids**.



Nila Ikat *Indigo*



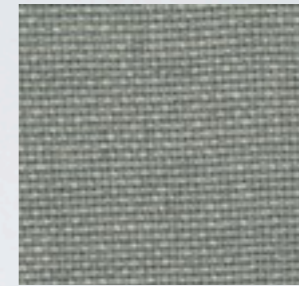
Wool Sateen
Clay



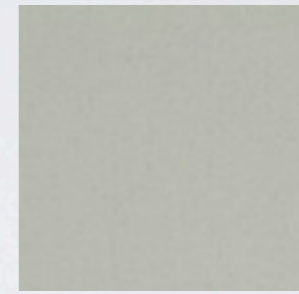
Brussels Linen
Honey



Soo Locks *Frost*



Linen Basket
Pewter



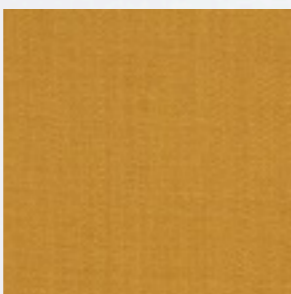
Cashmere Solid
Eucalyptus



Maricel *Afternoon*



Light Linen
Persimmon



Wool Sateen
Marigold



Songbird *Rose*



Light Linen
Lavender



Light Linen
Orchid