

RA DWELLSTUDIO MODERN COLOR THEORY

ABOUT DWELLSTUDIO



DwellStudio®

DwellStudio was founded in 1999 based on the realized there was an opportunity to offer the discerning home customer a range of bold and colorful modern textiles. The company quickly gained a devoted following and established itself as a go-to source for trend setting print and pattern. Thus, the brand grew - eventually encompassing everything from tabletop and rugs to a full baby and kids offering and now furniture.

Marked by a signature use of color and a sincere commitment to the highest quality, the DwellStudio name is synonymous with adventurous design and impeccable construction. Now a decade on, the company continues to evolve, pushing the boundaries aesthetically and tackling new design challenges each and every season, though it remains one of the most trusted names in the design market.



Christiane Lemieux is the Founder of DwellStudio, the author of *Undecorate*, mother of two plus a dog and is married to Joshua Young, who is also her business partner. Christiane graduated from the Parson's School of Design with a degree in Fashion design. She also has a degree in Art History. Christiane is inspired by travel and design. Most importantly, she is trying to figure out how to live a life of adventure with her family. Starting this business seemed like the best place to start.

RA DWELLSTUDIO MODERN COLOR THEORY

ROBERT ALLEN AND DWELLSTUDIO



Eclectic Modern Gate, Brindle

Global Modern Luxe From Top: Gate Stitch, Espresso; Shadow Trellis, Toffee; Almonds, Citrine; Masala, Toffee; Ikat Dot, Chocolate



The exclusive partnership between DwellStudio and Robert Allen began in 2010 with the introduction of **Eclectic Modern**. This best-selling multi-purpose collection included over 70 printed and woven fabrics in an eclectic mix of patterns and styles. Classic motifs, updated with clean lines and new scale combined with a bold and innovative color palette heavy in shades of *citrine, jade and charcoal*. Signature patterns from this collection included Gate, Dotscape, Snake Chain and Vintage Blossom.

In 2011, DwellStudio and Robert Allen continued their collaboration with the introduction of **Global Modern Luxe**. Global Modern Luxe marries DwellStudio's unique, mid-century inflected point of view with familiar forms like suzanis, kudas and geometric tile work. Antique motifs are brought to new life in bold colors, and tribal patterns are reinvented by experimenting with scale for a collection that's rooted in tradition and very much of the moment. Bestselling signature patterns include Batavia Ikat, Casablanc Geo and the Freja.

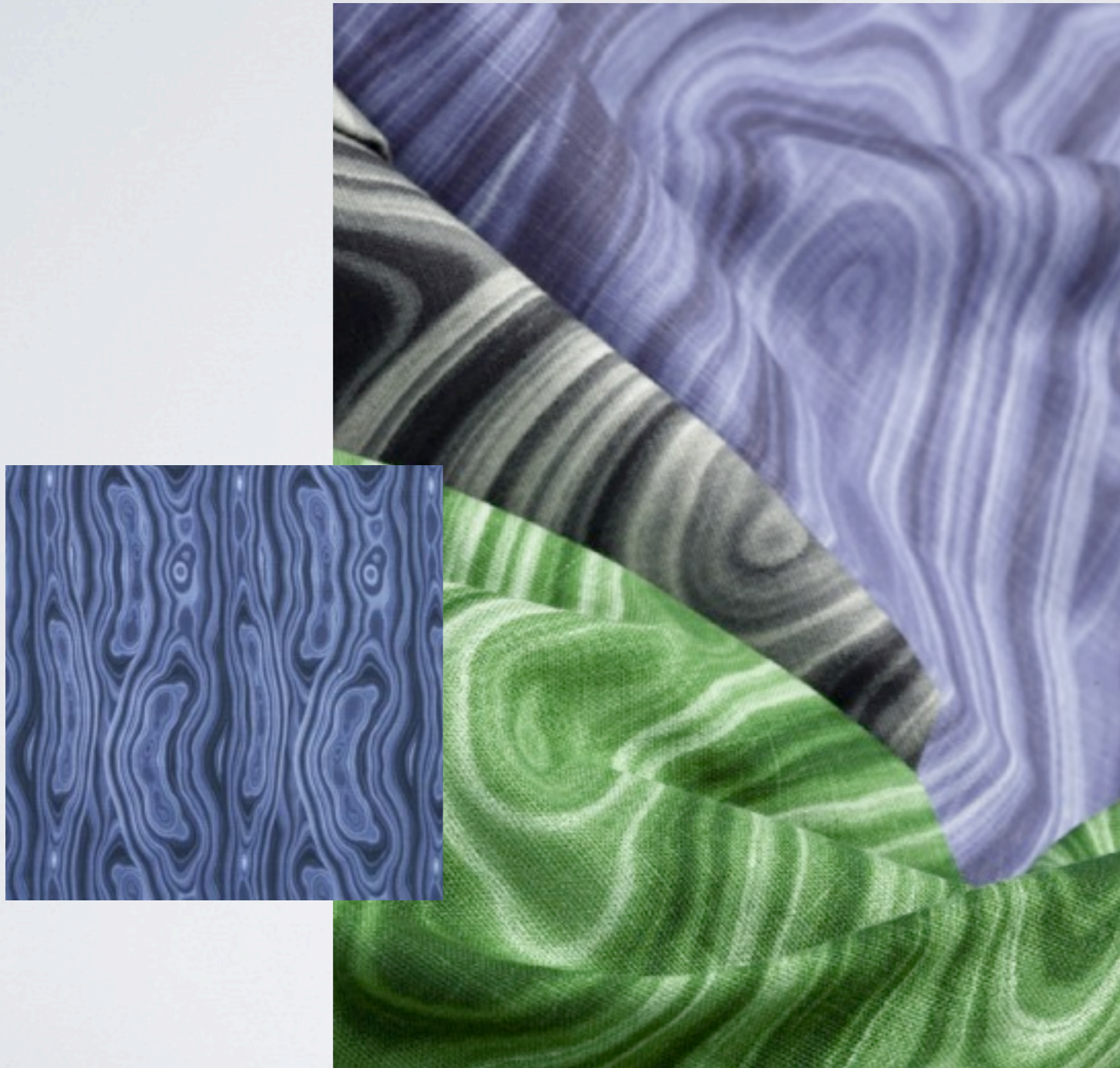


Modern Color Theory
Coco in Ultramarine, Malachite,
Brindle and Copper

Modern Color Theory

Modern Color Theory, Robert Allen's third collection with New York-based design house DwellStudio, brings the world to life in vibrant color. Inspired in equal measures by midcentury art and global crafts, these new prints and patterns marry warm textures with imperfect lines and forms that imply the handmade. It's a sophisticated grouping in an eye-catching palette of bold primaries and mineral tones that feels so fresh and new.

FEATURED FABRICS



Malakos

Ultramarine

Inspired by Malachite, a semi-precious gemstone recognizable for its distinct coloring: alternating bands of light and dark green. Reinterpreted here in a cool indigo shade, this design is a chic statement piece that packs a punch.
(100% Cotton)

Also available in *Ink* and *Malachite*



FEATURED FABRICS



Coco *Malachite*

Inspired by abstract painting, Coco features dramatic graphic geometry on a linen slub ground.

(100% Cotton)

Also available in *Copper*, *Brindle*, and *Ultramarine*

FEATURED FABRICS



Landsmeer

Ultramarine

This painterly watercolor floral is a work of art in itself. A sophisticated abstract motif available in three modern colorations, Landsmeer adds a decadent flourish to any interior.

(55% Linen, 45% Rayon)

Also available in *Citrine* and *Currant*

FEATURED FABRICS



Kings Walk *Ultramarine*

This playful lion damask pattern is the ultimate modern conversational piece. In this sophisticated blue colorway, Kings Walk illustrates one of the collection's key design elements: pure primary colors mixed with softer earth tones.

(44% Rayon, 32% Polyester, 24% Acrylic)

Also available in *Vapor* and *Citrine*

FEATURED FABRICS



Caravan *Citrine*

A playful yet modern piece featuring a unique antelope print. Showcasing the classic DwellStudio color combination of gray and citrine. Also available in a bold Copper colorway with a black linen ground.
(100% Cotton)

Also available in *Copper*

FEATURED FABRICS



High Wire *Linen*

Custom made for DwellStudio in India, High Wire features boldly colored hand-applied ribbons on a linen ground. Also available in Ink, Ultramarine and Malachite.

(75% Linen, 25% Viscose)

Also available in *Ink, Ultramarine, and Malachite*



Factoid

DwellStudio has opened its first flagship retail store in NYC's Soho. Stop by at 77 Wooster St next time you're in NYC.

FEATURED FABRICS



Zebra Geo

Ink

Christiane Lemieux's personal favorite from this collection. A graphic twist on a classic animal print in a sophisticated and chic jacquard construction.

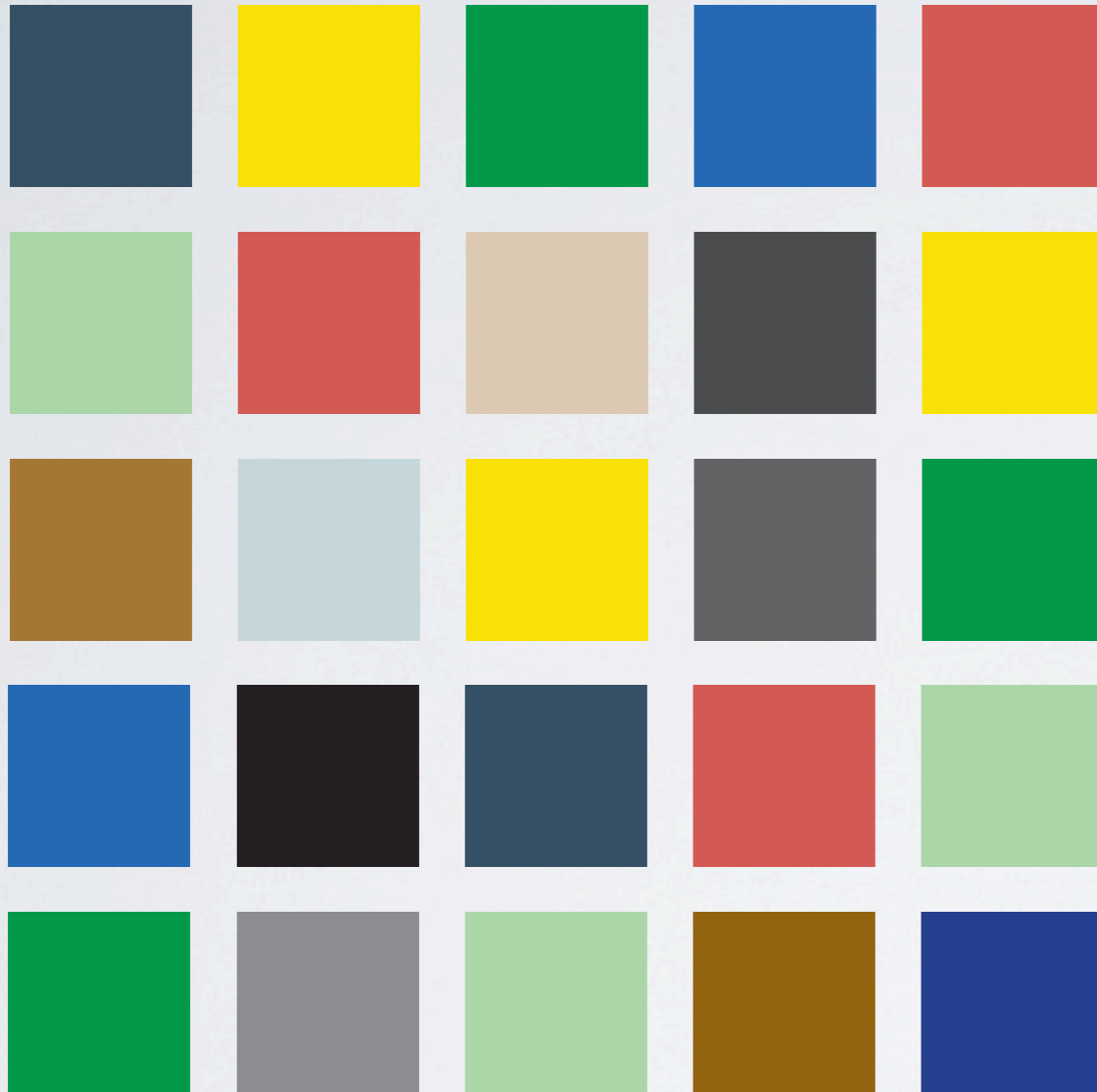
(54% Acrylic, 30% Polyester, 16% Rayon)

\$49.95 wholesale

Also available in *Currant* and *Copper*



COLOR LENS



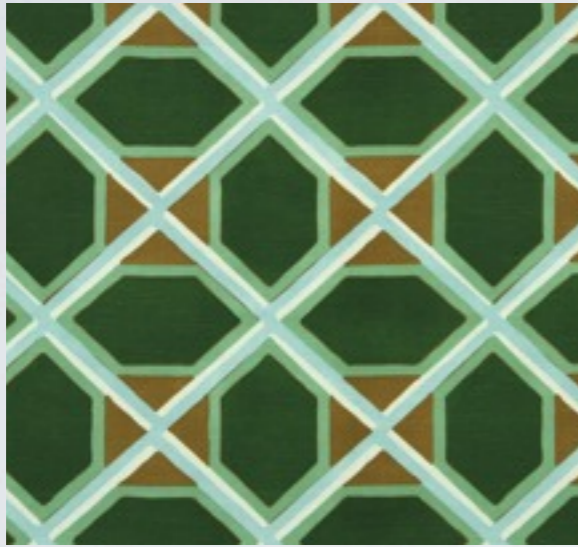
Modern Color Theory takes its inspiration from abstract, mid-century art palettes. Clean and saturated primary colors create striking statements when paired against the neutral hues found throughout the collection.

BUZZ WORDS

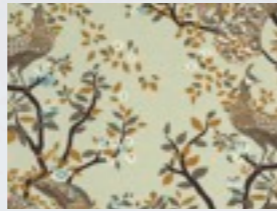
UNIQUE REINVENTED RETRO
MID CENTURY MODERN
HAND DRAWN LINES timeless
PAINTERLY WATERCOLOR EDGES
TEXTURAL CONVERSATIONAL ANIMALS
natural imperfections florals
PRIMARY COLORS
geometrics

RA DWELLSTUDIO MODERN COLOR THEORY

COORDINATES



Coco, Malachite



Vintage Plumes, Birch



Laurel Velvet, Aquamarine

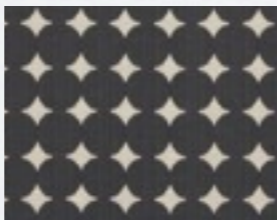
Modern Color Theory coordinates well with previous DwellStudio for Robert Allen collections.



Malakos, Ink



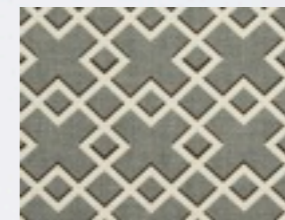
Shifted Stripe, Citrine



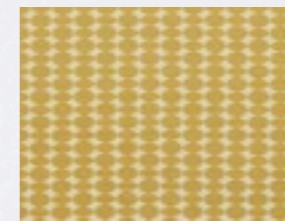
Ikat Dot, Black



Landsmeer, Ultramarine



Shadow Trellis, Toffee



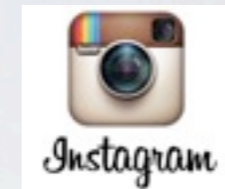
Almonds, Citrine



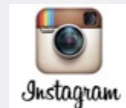
HOUSE BEAUTIFUL

Our exclusive Malakos fabric in the *Ink* colorway was featured in the July/August 2012 issue of House Beautiful. Find it on pages 4 and 38.





We're looking ahead to more DwellStudio for Robert Allen in 2013.



Factoid: We've expanded our Social Media. Follow us!

Twitter. @R_AllenDesign

Instagram. username: RobertAllenDesign

Pinterest. www.pinterest.com/RADesign

LinkedIn. www.linkedin.com/company/the-robert-allen-group

Facebook. www.facebook.com/RobertAllenGroup